

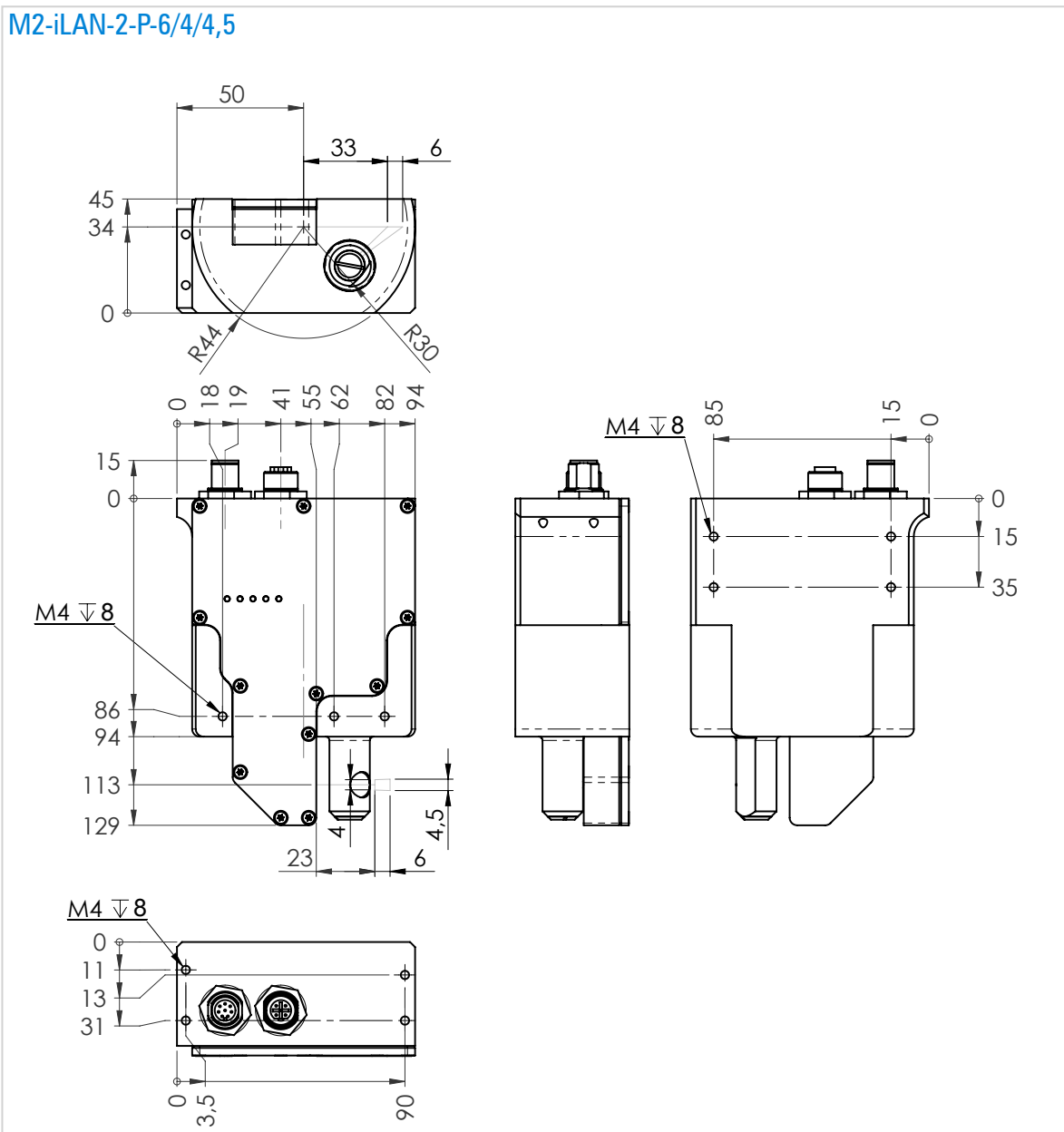
M2-iLAN-2-P

Laser Scanner



- 100 Hz measuring rate
- no additional controller necessary
- LAN connection

M2-iLAN-2-P-6/4/4,5



Error and technical modification reserved

DB-M2-iLAN-2-P_1-01-E

Breslauer Straße 2
D-85386 Eching
www.MELsensor.de

E-Mail: info@MELsensor.de
Tel. +49 (0) 89 / 327 150-0
Fax +49 (0) 89 / 319 20 23

MEL
Intelligent Sensors & Measuring Systems

Specifications M2-iLAN-2-P-6/4/4,5

Measuring range Z	6 mm
Range begin Z	23 mm
Begin of scan range X	4 mm
End of scan range X	4,5 mm
Resolution Z *	0,003 mm
Resolution X *	0,004 mm
Laser protection class	2
Linearity	0.2 % of range
Sampling rate	100 Hz
Specials	feeler gage, elapsed hour counter, serial number and sensor data readable
Light source	Laser, wave length 658 nm, red visible
Ambient light	5,000 Lux
Operating time	Laser diode: 50,000 h
max. Vibration	5 g up to 1 kHz
Operating temperature	0 °C ... +40 °C
Storage temperature	-20 °C ... +70 °C
Humidity	< 90% RH
Protection class	IP 64
Supply	8 - 30 V, P _w = 15 W
Object surface	white to black, shiny, high mirroring

* Measurement on matt white, diffusely reflecting surface

Pin assignment:

Ethernet cable - connector M12, round, 4 pin, D-coded, female:

Pin	Signal	Comment
1	Tx+	Transmission Data Ethernet +
2	Rx+	Received Data Ethernet +
3	Tx-	Transmission Data Ethernet -
4	Rx-	Received Data Ethernet -
Shield		connected with connector housing

Control cable - connector M12, round, 8 pin, A-coded, male:

Pin	Signal	comment
1	8 - 30 V	
2	Input 1	
3	GND	Incremental Encoder A + B
4	Input 2	
5	Sync out	for Synchronization of Sensors
6	Sync in	
7	TxD	RS232 Diagnostic Interface
8	RxD	
Shield		

Scope of Delivery

- Scanner head without cable and power supply (please order separately)
- Demo Software
- Manual

Options

please state for ordering

- 2 Scanners synchronized

Accessories

not included in delivery

- Connection cable (different lengths and types)
- Ethernet cable (different lengths and types)
- Power supply