



LASE 3000D Standard

LRS 3100/3110 - OEM 3100



Short description:

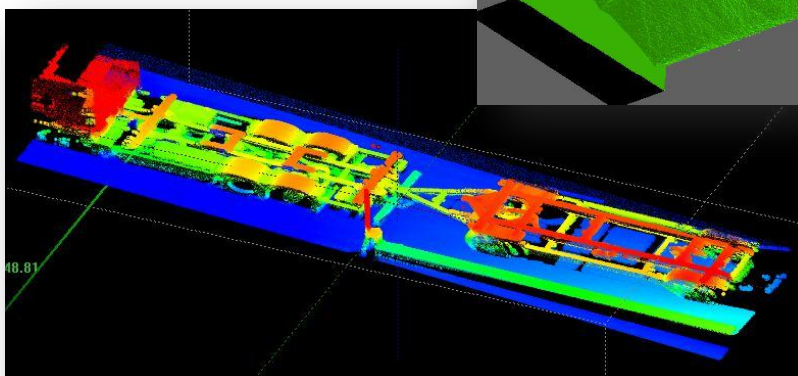
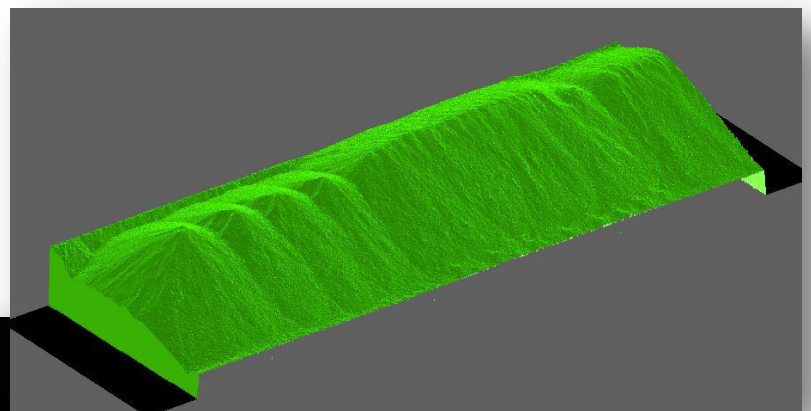
The high performance 3D-Laser scanner from LASE are based to the components of 2D laser scanner and a swiveling platform. The swiveling platform is turned by a servo-drive. A high resolution Encoder on the servo-drive measures the angle of rotation of the platform. By the linkage of the 2D-Laserdatas with the Encoder data; high precise 3D profile measurements are produced.

For operation, the modular LASE CEWS Application software is already available. With this, lots of applications were solved:


General characteristics:

- Contactless far reaching 3D profile measuring
- Range up to 250m on natural targets
- Scan area up to 180° x 300°
- High accuracy, high resolution
- Fast measuring rate
- Rugged construction, IP67 - heated
- Simple installation at each installation point

- Object dimension measurement
- Object position measurement
- Bunker volume measurement
- Bulk measurement in the open cut mining



Technical Data 3D-Laserscanner

Power Supply			
Servomotor	48 ± 2V / 20A; max. 25A		
Motor electronic	24V ± 3% / 3,5A		
Heating	24 ± 6V / 10A		
Optical Data			
			
Scanner type	OEM3100	LRS3100	LRS3110
typ. measurement by 10% remission	2,5..35m	2,5..80m	2,5..150m
Angular Stepp width Laserscanner	0,125°..1,5°	0,063°-1,5°	0,125°-1,5°
Scanarea Laserscanner	300°		
Measurement range	2,5..250m		
Rotation angle platform	+60 °/-90°		
Scan frequency Laserscanner	5...10 Hz +/- 5% in 1Hz-Steps		
Angle resolution platform rotation	0,008°		
Swivel speed	0..100°/s		
Environmental firmness			
Safety class	IP 66		
Shock and vibration	IEC 68		
Temperature area	Operation : - 25°C to +50°C Storage: - 25°C to 85°C		
Weight	45 kg		

Scope of Delivery:

3D Laser scanner and manual

Options:

Connection Box

with:

- Power Supply 24 VDC / 4A – Elektronik
- Power Supply 24 VDC / 10A – Heatings
- Power Supply 48 VDC / 25A – Servomotor
- Ethernet-Switch 5ports
- CAN-Ethernet-Konverter
- Automatic switches
- Terminals, Fittings

Cable Set

Required data and power lines in length of 5m, 10m or 20m

