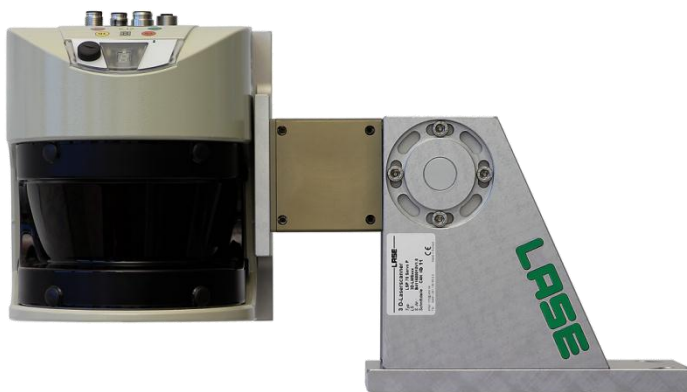




LASE 3000D- compact

LMS 100/111/151/400/511 - LD OEM1000



Short description:

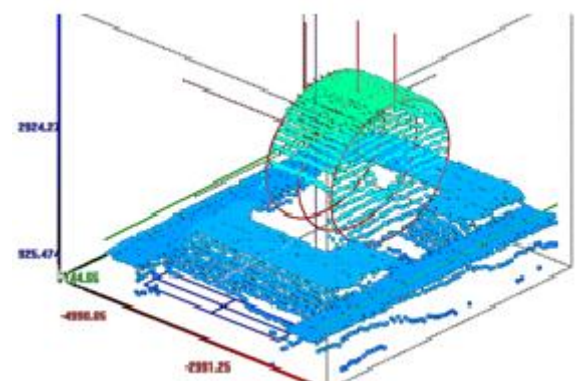
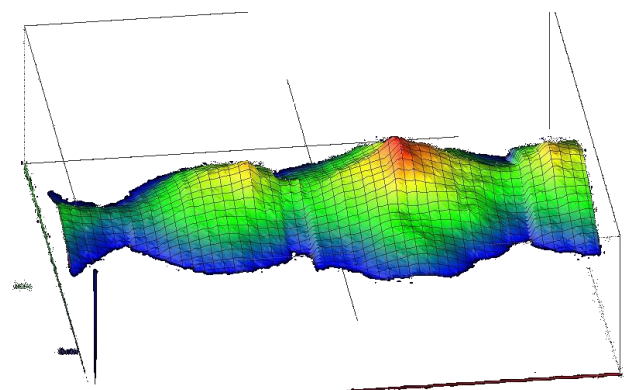
The high performance 3D-Laser scanner from LASE are based on a 2D laser scanner and a swiveling platform. The swiveling platform is turned by a servo-drive. A high resolution encoder on the servo-drive measures the angle of rotation of the platform. By the linkage of the 2D-Laser data with the encoder data high precise 3D measurement profiles are produced.

For operation the modular LASE CEWS Application software is available. With this, lots of applications can be solved:


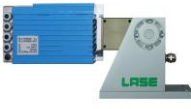

- Object dimension measurement
- Object position measurement
- Bulk material volume measurement

General characteristics:

- Contactless long range 3D profile measuring
- Range up to 100 m off natural surface
- Scan area up to 270° x 360°
- High accuracy, high resolution
- Fast Measuring rate
- Rugged construction IP65 outdoor reliable
- Easy installation



Technical data LASE 3000D-compact

Power supply	24 ± 2V / max. 8A					
Optical data						
						
Scanner type	LMS100	LMS111	LMS151	LMS400	LD -OEM1000	LMS 511
Typ. Range with 10% remission	18m			0,7..3m	30m	40m
Measurement range	20m	50m		2,3m	100m	60m
Scanangle Laser scanner	270°			70°	360°	190°
Angular resolution	0,25...0,5°			0,1°..1°	0,125°..1,5°	0,166°...1°
Scanfrequency	25Hz - 50Hz			270Hz..500Hz	5Hz..15Hz	100Hz
Rotation angle platform	up to ± 160°					
Angular resolution platform	up to 0,002°					
Swivelspeed	150°/s					
Resistance						
Protection class	IP 65					
Shock and vibration	IEC 68					
Temperature	operation : 0°C to +50°C with optinal heating -25° bis +50° storage: -10°C bis 70°C					
Weight	Approx.. 5 kg					

Scope of Delivery:

Laser scanner, Documentation

Options:

Connection Box

with:

- Power supply 24 VDC / 15 A
- Ethernet 5port switch
- CAN-Ethernet-Converter
- Fuses
- Terminals, Fittings

Cable Set

Required data and power lines in length of 5m, 10m or 20m

