

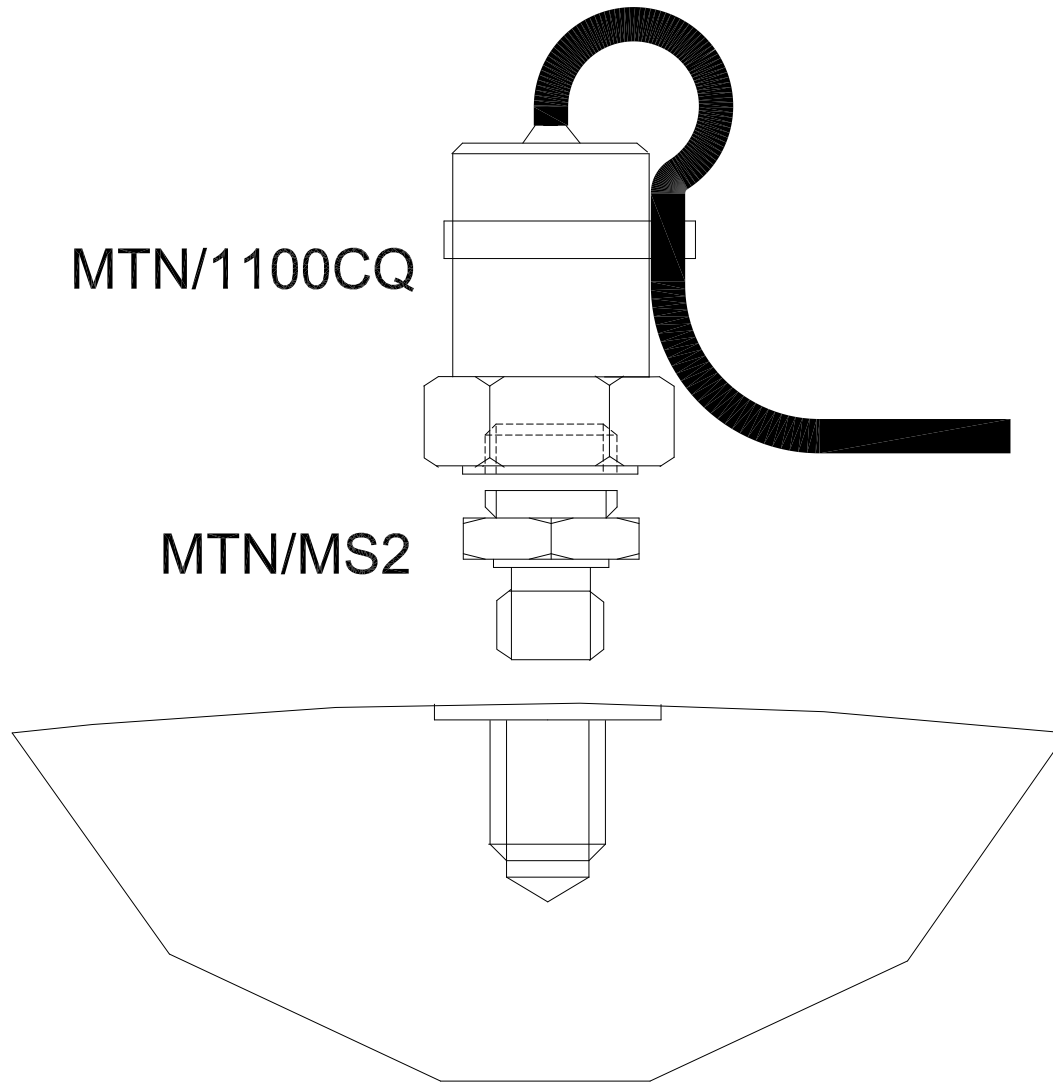


SENSOR TIP

FITTING INSTRUCTIONS FOR MTN/MS2 QUICKFIT TO M8 MALE STUD

To ensure that the accelerometer gives optimum performance, it is important that care is taken in mounting the stud and accelerometer as follows:-

1. Select a mounting position, in any plane, as close as possible to the vibration source.
2. A flat, smooth, unpainted surface 25mm in diameter is required. If this is not available, produce a suitable surface using a spot facing tool (MTN/MH001).
3. Drill a hole 6.8mm diameter in the centre of the flat area, to a depth of 10mm.
4. Using an M8 tap, thread the hole ensuring that there is at least 7mm of full thread.
5. De-burr the M8 hole and thoroughly clean the surface and the base of the stud with solvent.
6. Apply Loctite Screwlock to the M8 thread on the stud and smear grease on the mating surfaces.
7. Fit the stud into the threaded hole and tighten to 10Nm torque.
8. Before fitting the accelerometer to the stud, smear grease onto the mating surfaces to ensure good coupling to the accelerometer.
9. Fit the accelerometer to the stud and tighten to 8Nm torque.
10. Finally, loop the cable and cleat to the accelerometer body then cleat the cable to a surface to minimise movement.



MTN/1100CQ

MTN/MS2

USE QUICKFIT THREADED STUDS WHERE THE BEARING HOUSING CAN BE DRILLED & TAPPED, GIVING BETTER FREQUENCY RESPONSE. QUICKFIT HALF TURN THREAD ALLOWS DISCONNECTION OF THE ACCELEROMETER WITHOUT UNCLIPPING THE CABLE.