



AE Sensors B.V.
Jan Valsterweg 92
3315 LG Dordrecht
Tel.: +31 (0)78 6213152


AE-H3-G“S”-type Loadcell

For Tension and Compression Loadcells



Short description:

- Nickel plated Allow steel IP67 “S” type load cell.
- Tension and compression applications.
- Suitable for hanging, hopper and other weighing devices.
- Also available in imperial capacities and dimensions.

 test certificate no. D09-06.07
C of C no R60/2000-CNI-06.02

 Certificate no. 06-099A1

Available models:

Capacity	Full article description	Accuracy
50 kg	AE-H3-C3-50kg-3B	C3
100 kg	AE-H3-C3-100kg-3B	C3
250 kg	AE-H3-C3-250kg-3B	C3
500 kg	AE-H3-C3-500kg-3B	C3 Excluded from OIML
1 t	AE-H3-C3-1t-3B	C3 Excluded from OIML
2,5 t	AE-H3-C3-2,5t-6B	C3 Excluded from OIML
5 t	AE-H3-C3-5t-6B	C3 Excluded from OIML
7,5 t	AE-H3-C3-7,5t-6B	C3 Excluded from OIML

Specifications and dimensions are subject to change without notice and do not constitute any liability whatsoever.

WWW.AESENSORS.NL



AE Sensors B.V.
 Jan Valsterweg 92
 3315 LG Dordrecht
 Tel.: +31 (0)78 6213152

AE-H3-G“S”-type Loadcell

For Tension and Compression Loadcells

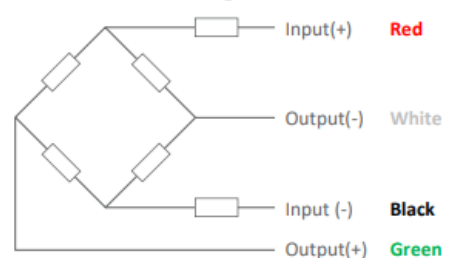
Technical specifications:

Accuracy class		OIML R60 C3	C3
Output sensitivity (= FS)	mV/V	3.0 ± 0.008	
Maximum capacity (Emax)	t	0.05, 0.1, 0.25	0.5, 1, 2.5, 5, 7.5
Max. number of load cell intervals	n_{LC}	3000	
Ratio of min. LC verification interval	$Y = E_{max} / v_{min}$	15000	14000
Combined Error	%FS	≤± 0.020	
Creep Error (30 minutes)	%FS	≤± 0.016	
Temperature Effect on Zero (ZTC)	%FS/10°C	≤± 0.015	
Temperature Effect on Sensitivity (STC)	%FS/10°C	≤± 0.011	
Zero Balance	0%FS	≤± 1.0	
Safe Overload	%FS	150	
Ultimate Overload	%FS	300	
Maximum Deflection	mm	0.1935 ~ 0.4079	
Excitation, Recommended Voltage	V	5 ~ 12	
Excitation, Maximum Voltage	V	18	
Input resistance	Ω	430 ± 60	
Output resistance	Ω	351 ± 2.0	
Insulation resistance	MΩ	≥5000	
Compensated temperature	°C	-10 ~ +40	
Operating temperature	°C	-35 ~ +65	
Storage temperature	°C	-40 ~ +70	
Element material		Nickel plated alloy steel	
Ingress Protection (acc. to EN 60529)		IP67	
Recommended torque on fixation	Nm	M8:25	M12:75 M20:450 M24:750
ATEX classification (optional)		II1G Ex ia II1C T4	II1D Ex iaD 20 T73°C II3G Ex nL IIC T4

Wiring:

- Shielded, 4 conductor cable, conductor AWG 22.
- Cable diameter: Ø 5mm.
- Standard cable length: 6m.
- Cable jacket: Polyurethane.
- Shield not connected to element.

4-Wire Connection Diagram



Specifications and dimensions are subject to change without notice and do not constitute any liability whatsoever.

WWW.AESENSORS.NL



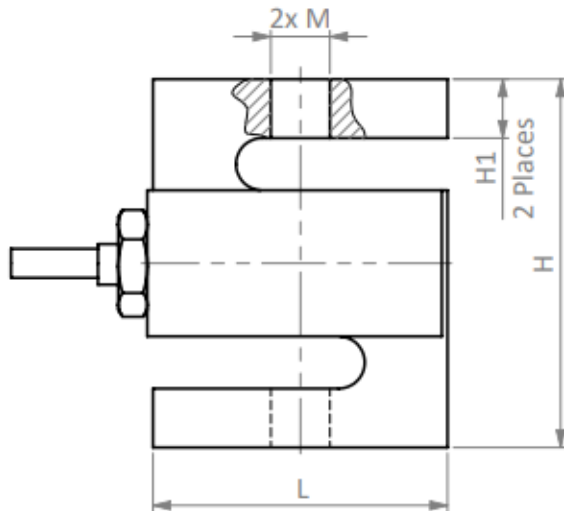
AE Sensors B.V.
 Jan Valsterweg 92
 3315 LG Dordrecht
 Tel.: +31 (0)78 6213152

AE-H3-G“S”-type Loadcell

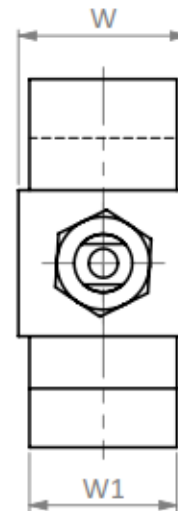
For Tension and Compression Loadcells

Dimensions in mm:

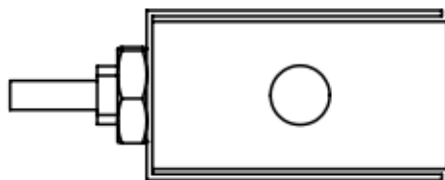
Side View



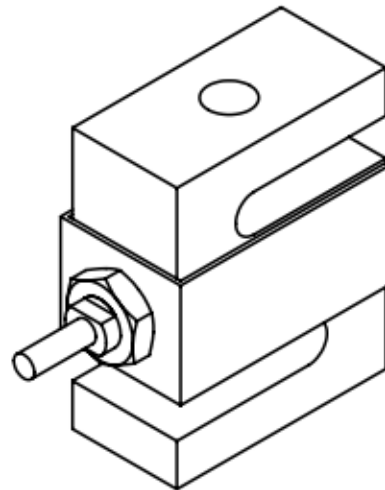
Back View



Top View



Isometric View



Dimension Capacity	L	H	W1	W	H1	M
50-100 kg	50,8	63,5	12,7	16,5	10,2	M8 x 1,25
250-500 kg	50,8	63,5	19,05	22,8	10,2	M12 x 1,75
1 t	50,8	63,5	25,4	29,2	10,2	M12 x 1,75
2,5 t	76,2	101,6	25,4	29,2	15,2	M20 x 1,5
5 t	76,2	101,6	25,4	29,2	20	M20 x 1,5
7,5 t	101,6	139,7	31,75	35,5	31	M24 x 2

Specifications and dimensions are subject to change without notice and do not constitute any liability whatsoever.

WWW.AESENSORS.NL


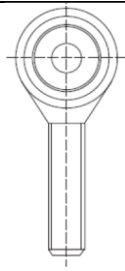
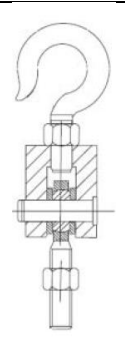
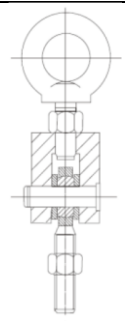
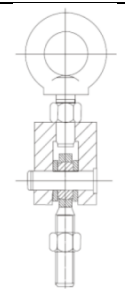


AE Sensors B.V.
Jan Valsterweg 92
3315 LG Dordrecht
Tel.: +31 (0)78 6213152

AE-H3-G“S”-type Loadcell

For Tension and Compression Loadcells

Available accessories:

<p>AE-HL-3-001-25Kg-5t hook</p> <ul style="list-style-type: none">• Alloy Steel• Suitable for hybrid scales, cranes scales, packaging scales and hopper scales	
<p>AE-HL-3-002-25Kg-5t eye</p> <ul style="list-style-type: none">• Alloy Steel• Suitable for hybrid scales, cranes scales, packaging scales and hopper scales	
<p>AE-HL-3-003-25Kg-5t rod end</p> <ul style="list-style-type: none">• Alloy Steel• Suitable for hybrid scales, cranes scales, packaging scales and hopper scales and other electronic weighing devices.	
<p>AE-HL-3-004-25Kg-5t hook assembly</p> <ul style="list-style-type: none">• Alloy Steel• Suitable for hybrid scales, cranes scales, packaging scales and hopper scales and other electronic weighing devices.	
<p>AE-HL-3-005-25Kg-5t eye assembly</p> <ul style="list-style-type: none">• Alloy Steel• Suitable for hybrid scales, cranes scales, packaging scales and hopper scales and other electronic weighing devices.	

Specifications and dimensions are subject to change without notice and do not constitute any liability whatsoever.

WWW.AESENSORS.NL